

Ariake Chair
 Gabriel Tan
 有明チェア
 ガブリエル・タン



Ariake Chair

Material	Oak (Whitened, Natural, Smoke) / Ash (Sumi, Indigo)
Upholstery	Leather / Leather Strap / Fabric / Textile Strap / Paper Cord
Net. Size	W 500 × D 515 × H 825 / SH 450 / CBM 0.28
Weight	7 KG

Finishes and Upholstery Options



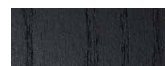
Oak Whitened



Oak Natural



Oak Smoke



Ash Sumi



Ash Indigo



Midori Fible
Black



Midori Fible
Natural



Sorensen Dunes
Camel



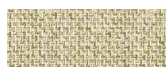
Sorensen Dunes
Dark Brown



Sorensen Dunes
Antracite



Moriden Baton B-CGR



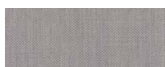
Moriden Baton B-IV



Kvadrat Maple 132



Kvadrat Maple 722



Kvadrat Fiord 121



Kvadrat Fiord 191



Kvadrat Molly2 114



Kvadrat Molly2 164



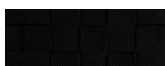
Tochigi Earth Leather
Black



Tochigi Earth Leather
Beige



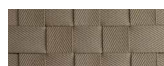
Tochigi Earth Leather
Jeans



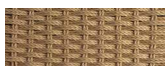
Textile Strap
Black



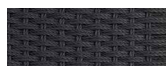
Textile Strap
Navy



Textile Strap
Beige



Paper Cord Natural



Paper Cord Black

For more details on our upholstery options please consult the materials brochure.

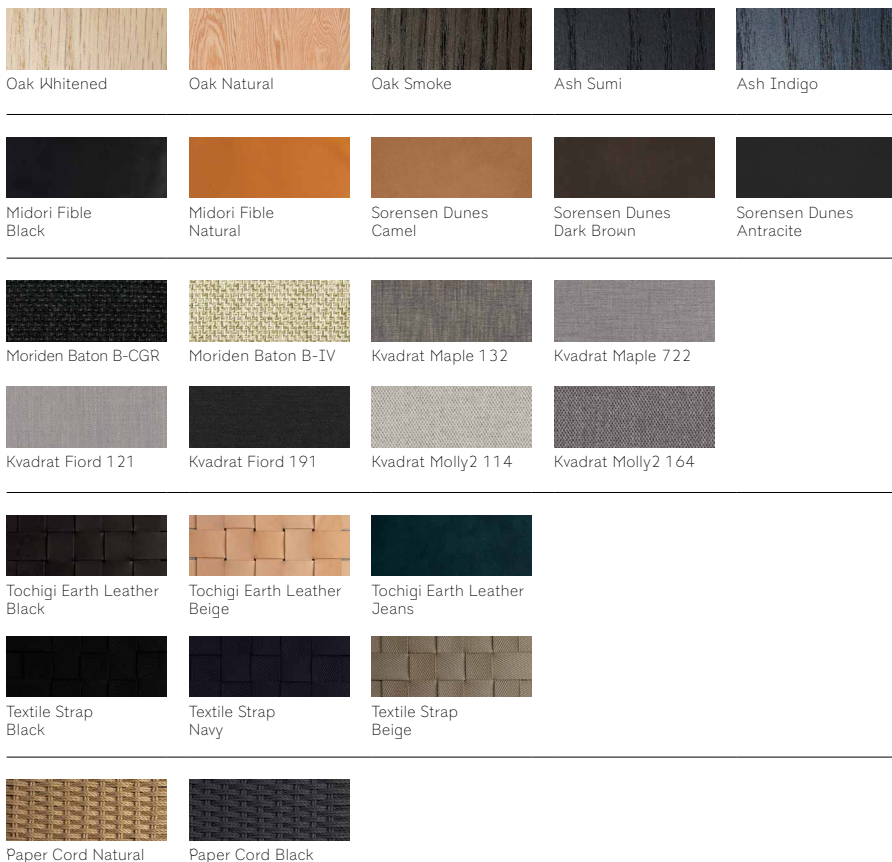
Ariake Arm Chair
Gabriel Tan
有明 アームチェア
ガブリエル・タン



Ariake Arm Chair

Material	Oak (Whitened, Natural, Smoke) / Ash (Sumi, Indigo)
Upholstery	Leather / Leather Strap / Fabric / Textile Strap / Paper Cord
Net. Size	W 545 × D 515 × H 825 / SH 450 / CBM 0.31
Weight	8 KG

Finishes and Upholstery Options



For more details on our upholstery options please consult the materials brochure.