

ARI
AKE
有明

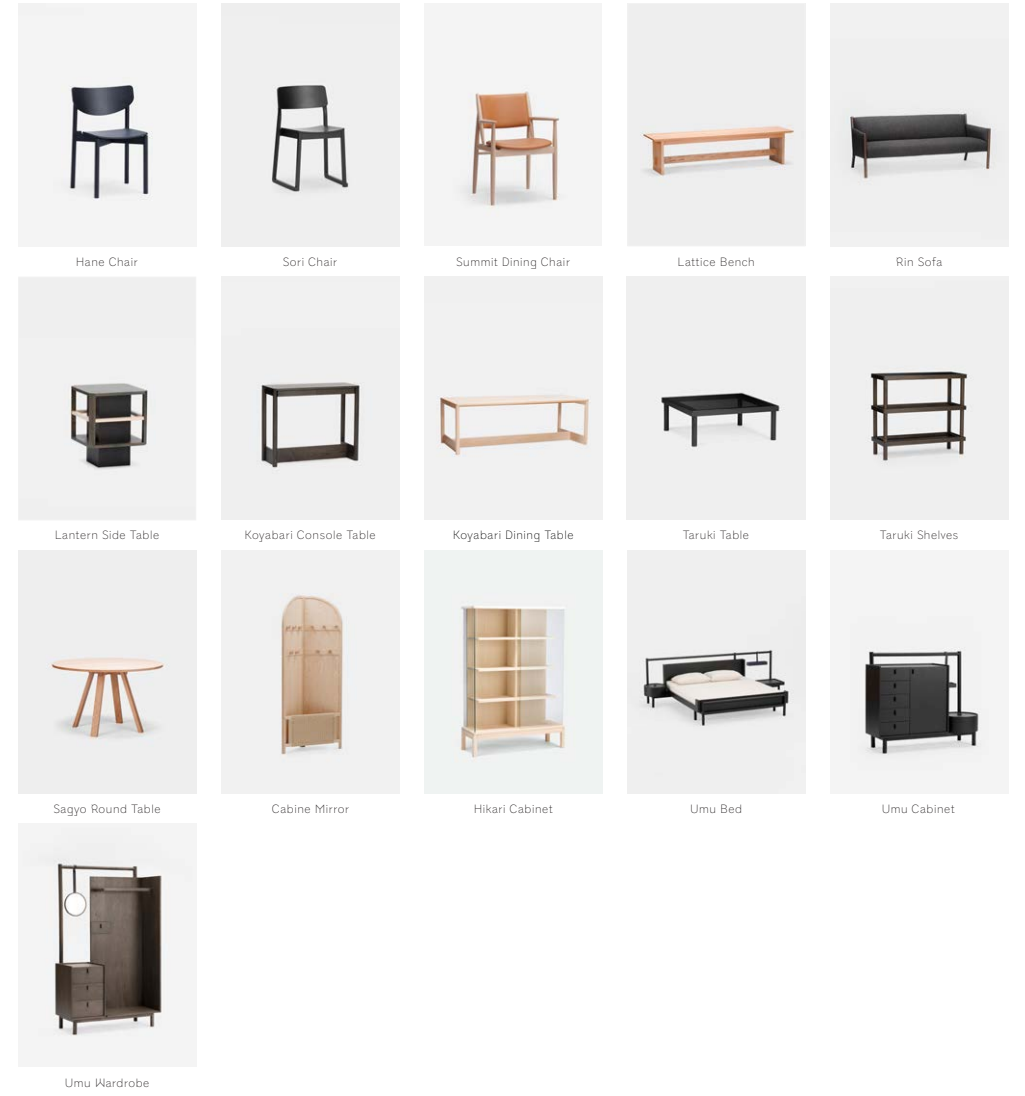
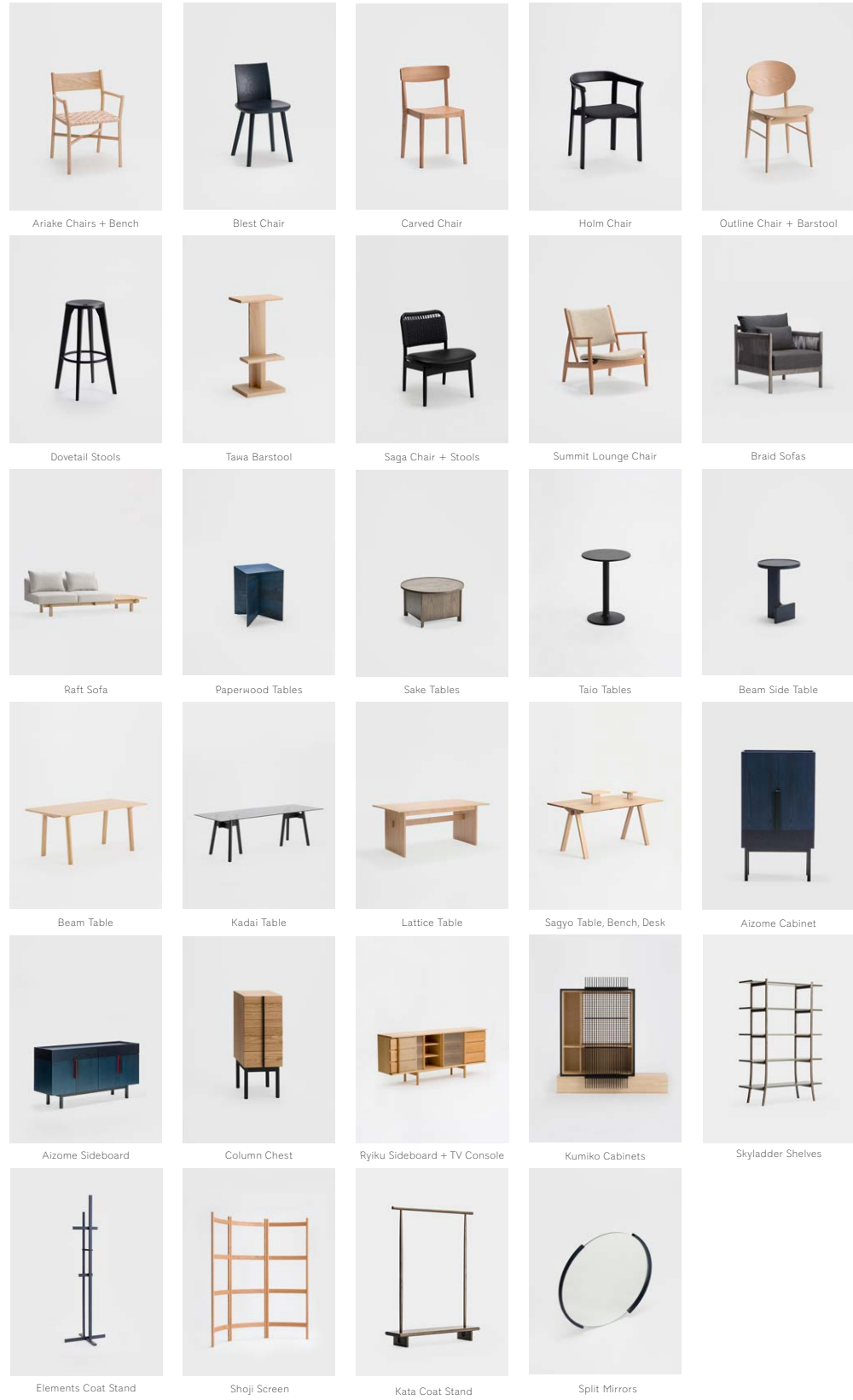






Ariake 有明

Ariake is a furniture brand founded by Legnatec and Hirata Chair, two furniture factories from Morodomi in Saga prefecture, Japan. Named after the nearby Ariake Sea, Ariake also means 'daybreak' in Japanese. The collaboration started in 2016 when Takehiro Kabashima of Legnatec and Shoji Hirata of Hirata Chair met designer and creative director Gabriel Tan with an ambition to export their furniture to the world. A long term vision was established and with art direction by Martina Perrin and photographic storytelling by Sebastian Stadler, the Ariake brand was born. Keiji Ashizawa, Staffan Holm, Anderssen & Voll, Norm Architects, Shin Azumi, Zoë Mowat, Note Design Studio, Rui Alves, Neri & Hu, Inga Sempé and Francesco Rota were subsequently invited to design for the brand.——It is Ariake's belief that strong working relationships are the foundation of good products. The creation of Ariake's collections were done over intensive workshops in Japan where designers and craftsmen lived, worked and ate together. Utilising the best of hand and machine, Ariake is a brave Japanese brand working with the world's most progressive designers to create furniture inspired by Japan with an international outlook.



New Collection 新

Hane Chair ハネチェア	11
Sori Chair ソリチェア	14
Summit Dining Chair サミットダイニングチェア	17
Lattice Bench ラティスベンチ	19
Rin Sofa リンソファ	22
Lantern Side Table ランタンテーブル	27
Koyabari Console Table コヤバリコンソールテーブル	31
Koyabari Dining Table コヤバリテーブル	36
Taruki Table タルキテーブル	39
Taruki Shelves タルキシェルフ	44
Sagyo Round Table サギョウラウンドテーブル	46
Cabine Mirror キャビンドレッサー	49
Hikari Cabinet ヒカリキャビネット	53
Umu Bed ウムベッド	54
Umu Cabinet ウムキャビネット	57
Umu Wardrobe ウムワードローブ	60

Rui Alves







Keiji Ashizawa





Norm Architects





Norm Architects







Gabriel Tan







Zoë Mowat







Gabriel Tan



コヤバリコンソールテーブル

Koyabari Console Table



A simple, dark-stained wooden console table with a flat top and a lower shelf. A small, light-colored decorative object sits on the top surface.

A tall, black metal coat rack with a vertical post and several horizontal bars for hanging coats or bags.

A black console table with a dark top and a lighter-colored lower section. On top, there is a wooden tray containing a black teapot and a black cup. To the right, a small, round, reddish-brown ceramic vase holds a dried, branching plant.

A portion of a dark-stained wooden dining table and a matching wooden stool with a light-colored, textured seat cushion.





Gabriel Tan





Gabriel Tan









Gabriel Tan





Keiji Ashizawa





Inga Sempé







Staffan Holm





Neri & Hu





Neri & Hu







Neri & Hu





Ariake Chairs and Bench 有明チェア	65
Blest Chair ブレストチェア	68
Carved Chair カーブチェア	71
Holm Chair ホルムチェア	75
Outline Chair and Barstool アウトラインチェア	78
Dovetail Stools ダブテイルスツール	82
Tawa Barstool タワバースツール	86
Saga Chair and Stools サガ チェア+スツール	88
Summit Lounge Chair サミットラウンジチェア	92
Braid Sofas ブレイド(組紐)ソファ	96
Raft Sofa ラフトソファ	100
Paperwood Tables ペーパーウッドテーブル	103
Sake Tables サケテーブル	108
Taio Tables タイオウテーブル	113
Beam Tables ビームテーブル	116
Kadai Table カダイテーブル	120
Lattice Table ラティステ이블	122
Sagyo Table, Bench and Desk サギョウテーブル	126
Aizome Cabinet 藍染キャビネット	132
Aizome Sideboard 藍染サイドボード	134
Column Chest コラムチェスト	136
Rikyu Sideboard, TV Console 離宮サイドボード	138
Kumiko Cabinets 組子キャビネット	141
Skyladder Shelves スカイラダーシェルフ	144
Elements Coat Stand エレメンツコートスタンド	146
Shoji Screen ショウジスクリーン	149
Kata Coat Stand カタ コートスタンド	152
Split Mirrors スプリットミラー	157

Gabriel Tan







Anderssen & Voll





Staffan Holm







Staffan Holm







Norm Architects







Staffan Holm







Anderssen & Voll





Anderssen & Voll







Norm Architects







Norm Architects + Studio mk27







Keiji Ashizawa





Anderssen & Voll









Note Design Studio







Anderssen & Voll







Staffan Holm







Keiji Ashizawa





Norm Architects







Keiji Ashizawa









Zoë Mowat





Zoë Mowat





Gabriel Tan





Gabriel Tan





Staffan Holm

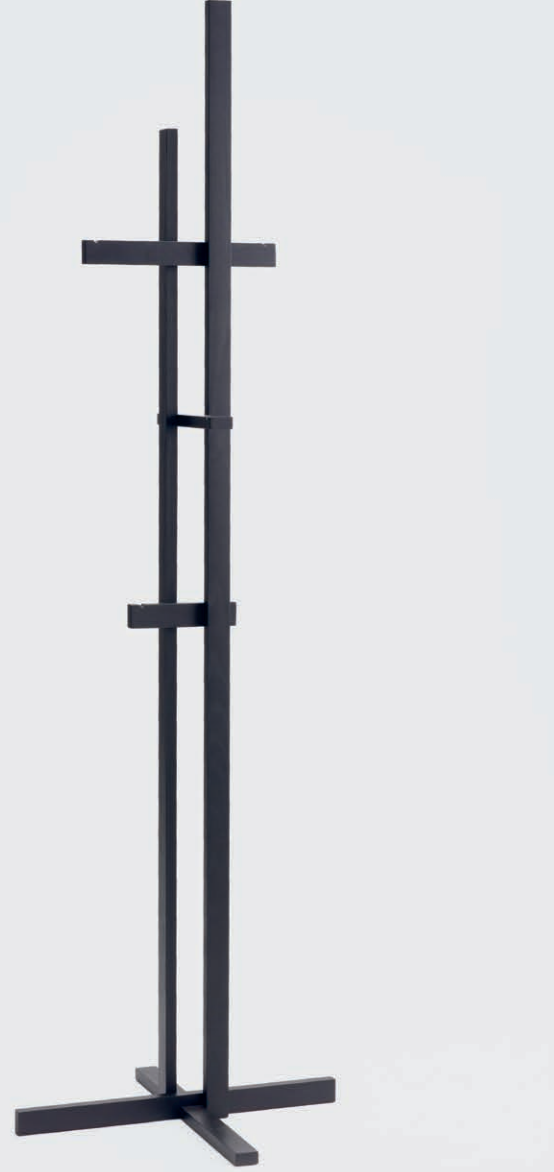






Gabriel Tan





Shin Azumi





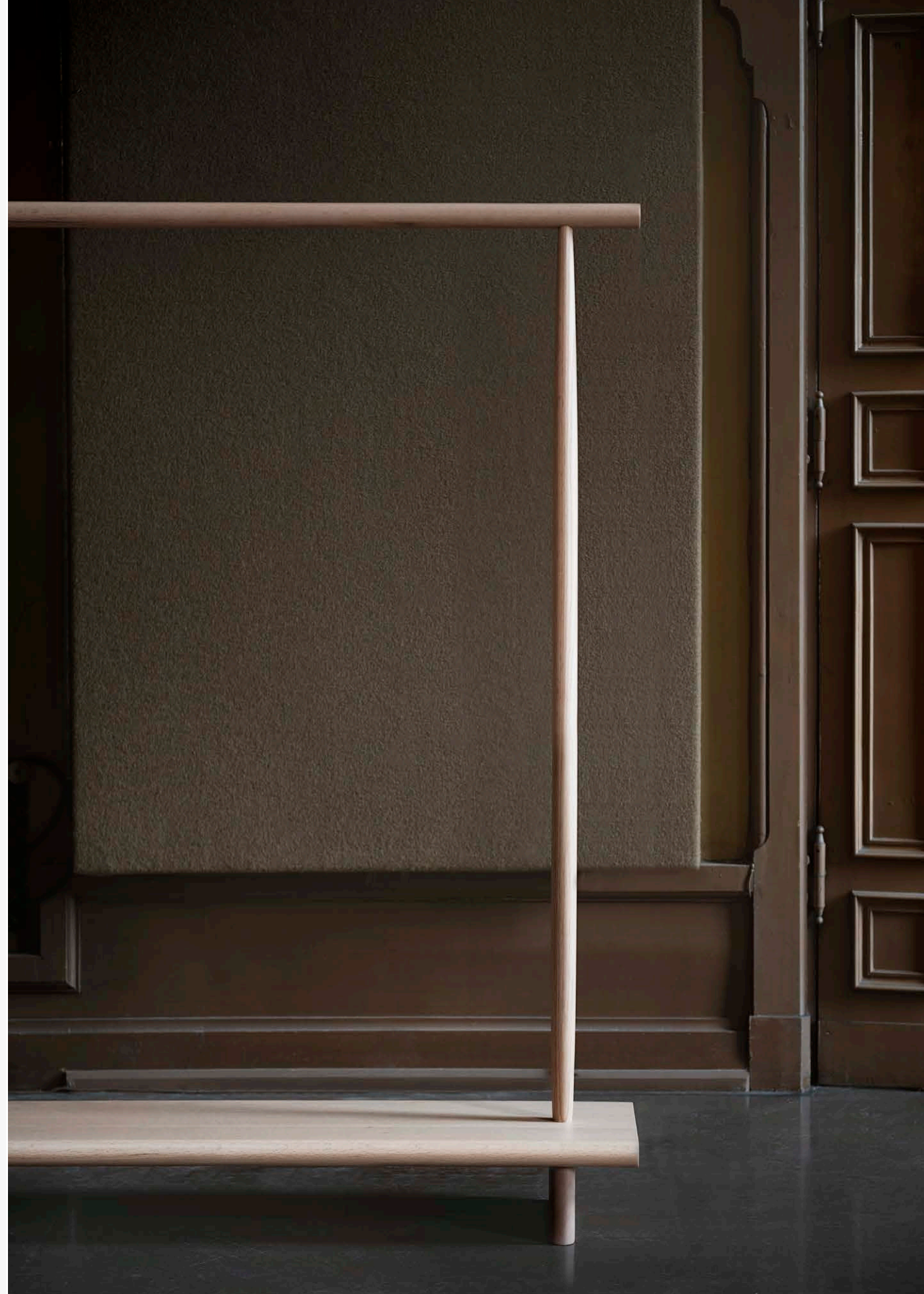
Gabriel Tan







Rui Alves

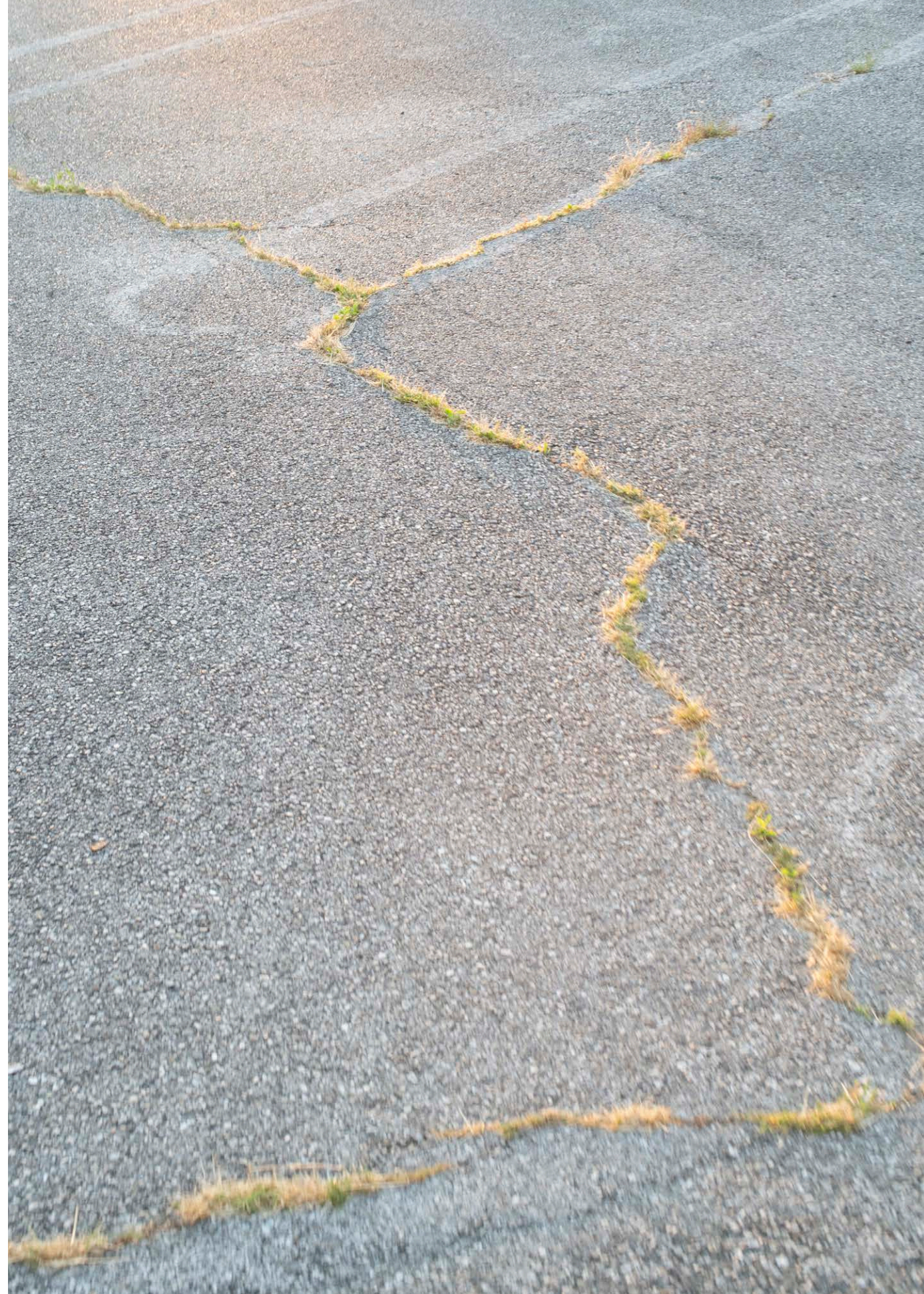






Zoë Mowat









HIRATA CHAIR MANUFACTURE Co.,Ltd

Made in Japan since 1963, and with over 20 employees under the leadership of its President, Shoji Hirata, Hirata Chair produces dining tables, wooden and upholstered chairs with the objective of making good furniture for better living. From design to material selection and production, Hirata maintains its high level of quality control by keeping all processes in-house. With solid wood sourced from the USA, Hirata offers a wide variety of upholstery to suit different preferences.

有限会社 平田椅子製作所

1963年に創業。より良い暮らしの為に家具づくりを目指して、椅子やテーブル等を製作している。デザインから材料の選定、そして製作に至るまで全工程を社内で行ない、高いレベルの品質を保つ。北米産の無垢素材を用い、ユーザーからの様々な要望に応えるべく、幅広いデザインへの対応を行なっている。

LEGNATEC Co.,Ltd

Founded in 1964 in Morodomi, Saga Prefecture, Legnatec is a furniture manufacturer. Legnatec strives to be innovative, flexible and adaptive and has a good inventory of the latest technologies for wood-furniture manufacturing. Led by its president, Takehiro Kabashima, it has over 50 employees. Working with both solid wood and veneered wood, Legnatec offers a large variety of wood choices for their customers.

レグナテック株式会社

1964年佐賀県諸富町で創業した家具メーカーである。常に革新的で柔軟に時代の流れを追及し続け、家具製造の為に最新設備を導入してきた。無垢や突板といった素材を大切に、幅広いジャンルの木製家具を提供し続ける。

CONTACT

For further information please visit

詳しい資料と画像をご希望の方はご連絡下さい。

www.ariakecollection.com

ARIAKE JAPAN

266-1, Yamaryo Oaza, Morodomi-Cho,

Saga Prefecture, 840-2106, Japan

〒840-2106, 佐賀県佐賀市諸富町大字山領266-1

+81 0952 47 6111

info@ariakecollection.com

Special thanks to

Arita Huis

矢橋徹建築設計事務所



List of all Contacts

