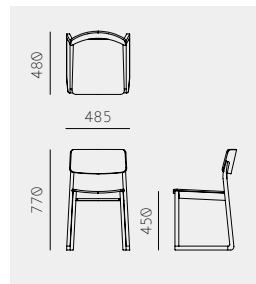
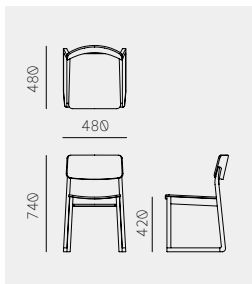


Sori Chair
 Keiji Ashizawa
 ソリ チェア
 芦沢 啓治



Sori Chair 420

Material	Oak (White, Natural, Smoke) / Ash (Sumi)
Upholstery	Fabric / Leather
Net. Size	W 480 × D 480 × H 740 / SH 420 / CBM 0.33
Weight	5.6 KG

Packing 2 chairs in 1 carton box.

Sori Chair 450

Material	Oak (White, Natural, Smoke) / Ash (Sumi)
Upholstery	Fabric / Leather
Net. Size	W 485 × D 480 × H 770 / SH 450 / CBM 0.33
Weight	5.6 KG

Packing 2 chairs in 1 carton box.

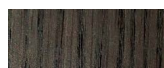
Finishes



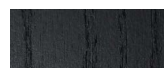
Oak White



Oak Natural

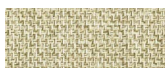


Oak Smoke



Ash Sumi

Fabric Options



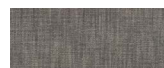
Moriden Baton B-IV



Moriden Baton B-CGR



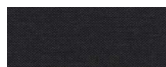
Kvadrat Maple 722



Kvadrat Maple 132



Kvadrat Fiord2 121



Kvadrat Fiord2 191



Kvadrat Molly2 114



Kvadrat Molly2 164

Leather Options



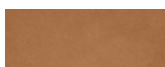
Midori Fibre
Camel



Midori Fibre
Natural



Midori Fibre
Black



Sorensen Dunes
Camel



Sorensen Dunes
Dark Brown



Sorensen Dunes
Anthrazite

For more details on our upholstery options please consult the materials brochure.